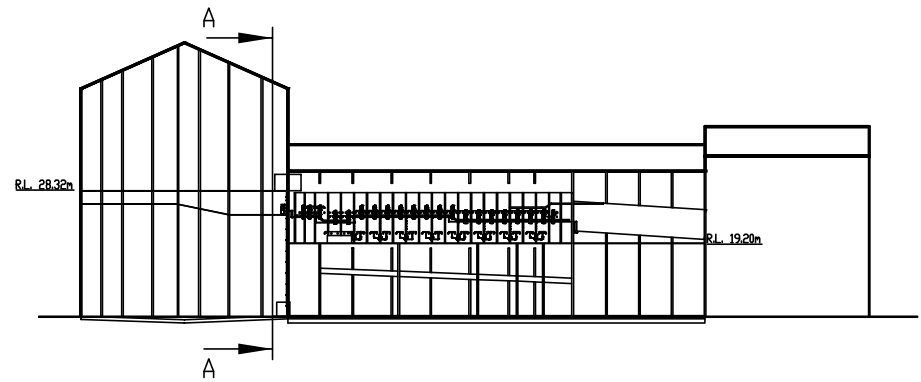


No.	OFF	ITEM	MARK No.	PART NUMBER	DESCRIPTION	MATERIAL
6	a	A	A1FVT1216	FLANGE BUTT WELD TUBE (MTG TAPPED HOLES)		AIISI 316 (SS)
7	b	A	A1FYT1216	FLANGE BUTT WELD TUBE (WITH O'RING SEAL)		AIISI 316 (SS)
1	c	A	A2FYJ2021	FLANGE BUTT WELD TUBE (WITH O'RING SEAL)		AIISI 316 (SS)
1	d	A	ISO POD	ISOPOD CONTAINER		AS3678-250
23	e	A	PIPE SUPPORT	75 PFC		AS3678-250
1	f	A	S30314	LUBRICATION SYSTEM CONTROL PANEL		AIISI 316 (SS)
23	g	A	SINGLE PIPE CLAMP	STAUFF SINGLE PIPE CLAMP HEAVY DUTY SPAL-4025.4-PP-DPAL-M-W15-K		AS3678-250
8	h	A	JF1SS-2112J	HOSE TAILS ST SWIVEL - JF1SS-2112J		AIISI 316 (SS)
4	k	A	TEL-Q01	LR ELBOW OD 25.4 X 2.11 316 SS		AIISI 316 (SS)

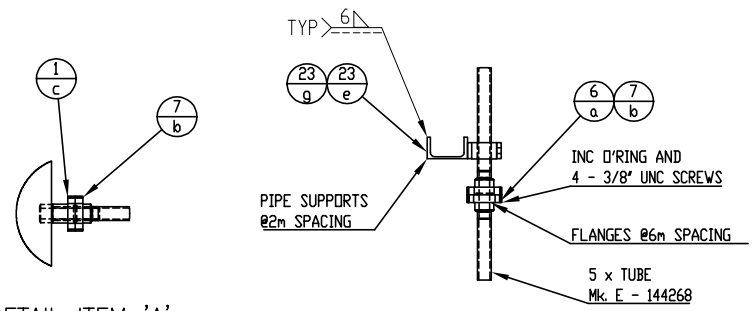
TABLE Mk.A-144268
SCALE 1:1000



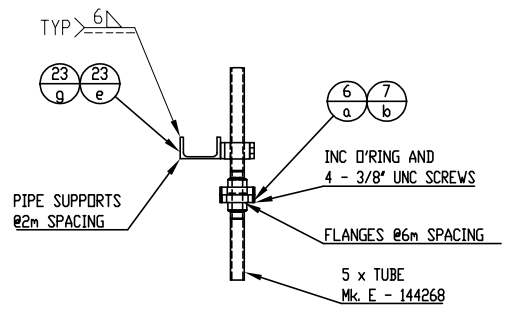
NOTES:

1. ALL DIMENSIONS SHOWN ARE IN MILLIMETRES.
2. ALL DIMENSIONS GIVEN FOR MATERIAL ARE GROSS DIMENSIONS WITH NO REDUCTION FOR WELD PREPARATION.
3. ALL STEEL HOT ROLLED SECTIONS AND PLATES SHALL BE GRADE 250 OR 300+ STEEL TO AS3678 OR AS3679.
4. MARK LETTERS FOLLOWED BY DRAWING NUMBER AND ORIENTATION SHALL BE CLEARLY MARKED ON ALL ITEMS.
5. ALL WELDING AND WELD PREPARATION SHALL BE IN ACCORDANCE WITH QUALIFIED OR PRE-QUALIFIED WELDING PROCEDURE.
6. WELD ELECTRODE NOMINAL STRENGTH SHALL BE $F_{uw} = 480 \text{ MPa UNO}$.
7. ALL WELDS SHALL BE 6mm CONTINUOUS FILLET UNO.
8. WELDING SYMBOLS ARE TO AS1101.3.
9. INSPECTION BY GFG ALLIANCE MAY INCLUDE NON-DESTRUCTIVE TESTING OF ANY WELD.
10. ALL BOLTING SHALL BE TO AS1252 CLASS 8.8/S UNO.
11. COMPONENTS TO BE PAINTED TO GFG ALLIANCE PAINT SPEC NC1 COLOUR YELLOW UNO.
12. ALL REFERENCED STANDARDS SHALL BE TO THE LATEST REVISION.
13. ALL WELDING SHALL CONFORM TO GFG ALLIANCE WELDING SPECIFICATION SP4/01-ENGINEERING (W137.MTS.104).

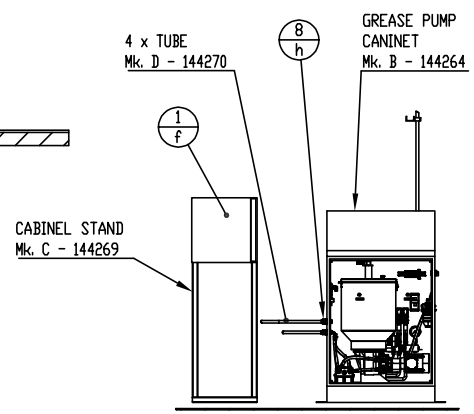
SECTION A-A
SCALE 1 : 250



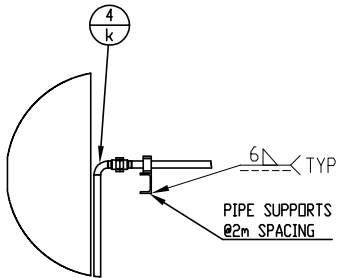
DETAIL ITEM 'A'
SCALE 1 : 10



DETAIL ITEM 'B'
SCALE 1 : 10



DETAIL ITEM 'D'
SCALE 1 : 50



DETAIL ITEM 'C'
SCALE 1 : 20

REFERENCE DRAWINGS:
144264 - GREASE PUMP CABINET
144269 - CABINET STAND
144270 - PIPING ASSEMBLY

No.	OFF	MARK No.	DESCRIPTION	MATERIAL	MASS/UNIT	REMARKS	SAP MATERIAL NUMBER
5	E-144068	1"	SS TUBE LENGTH	AIISI 316(SS)	6.0 m		STAUFF #003060343
4	D-144070		PIPING ASSEMBLY	AIISI 316(SS)	4.5 m		
1	C-144069		CABINET STAND	SEE ITEM LIST			
1	B-144064		GREASE PUMP CABINET	SEE ITEM LIST			
1	A-144068		TABLE	SEE ITEM LIST			
1		COL				DATE : 26/06/2023	SCALE :
CAP. A B ArtCAD CAPITAL 92813395			64 AUDLEY STREET WOODVILLE NORTH SA 5012 AUSTRALIA Ph : 08 8347 1700		DRAWN : JW CHECKED : DH REVIEWED : PD		SIGNATURE WNC
PEA 46P 46A LUB Revisions CAD. REF.			HYDROIL HYDRAULIC SERVICE		144268		

64 AUDLEY STREET
WOODVILLE NORTH
SA 5012 AUSTRALIA
Ph : 08 8347 1700

HYDROIL
HYDRAULIC SERVICE

Project Number
144268