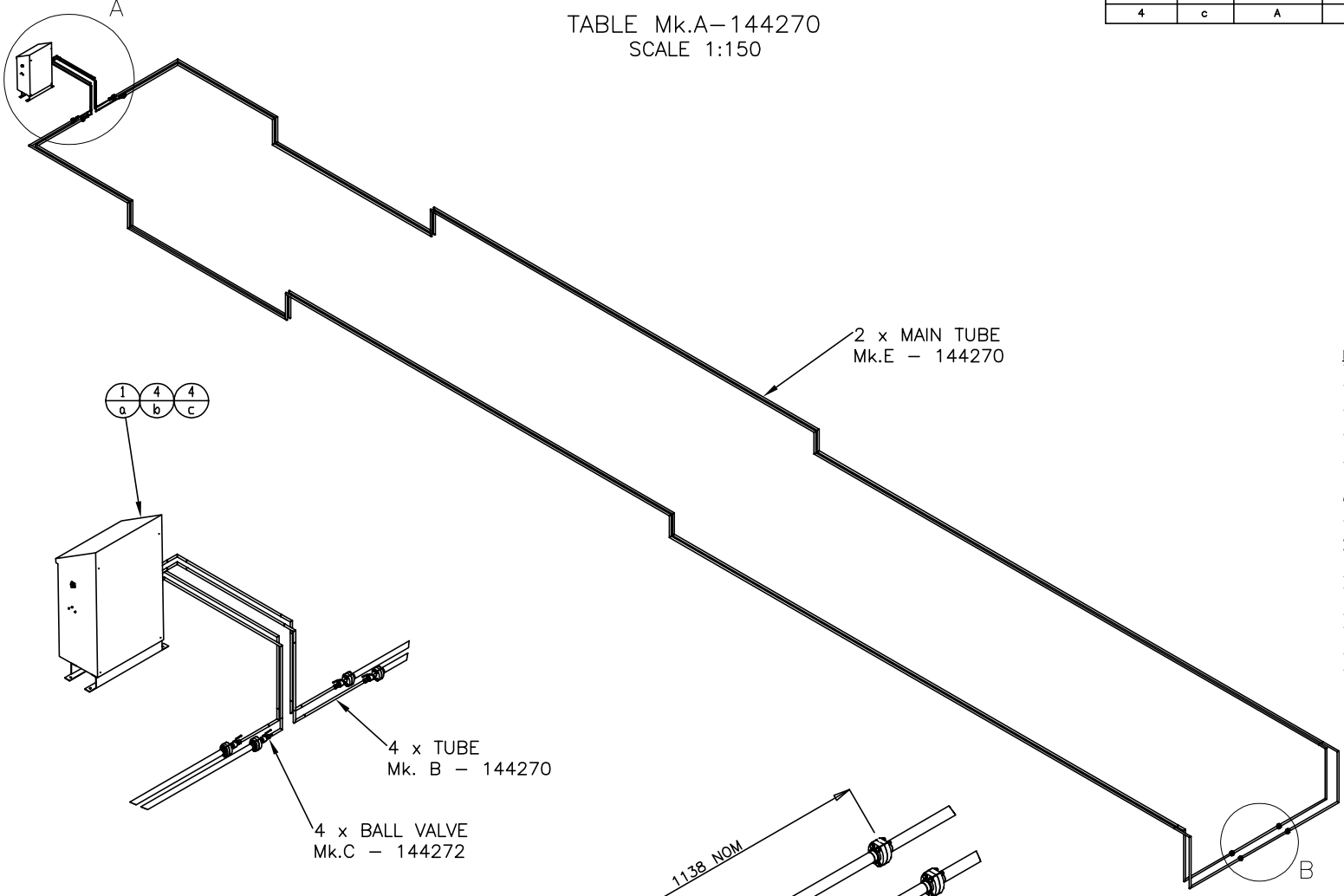


1 2 3 4 5 6 7 8 9 10 11 12 13 14 15 16 17 18 19 20 21 22 23 24 25 26 27 28 29 30 31 32 33 34 35 36 37 38

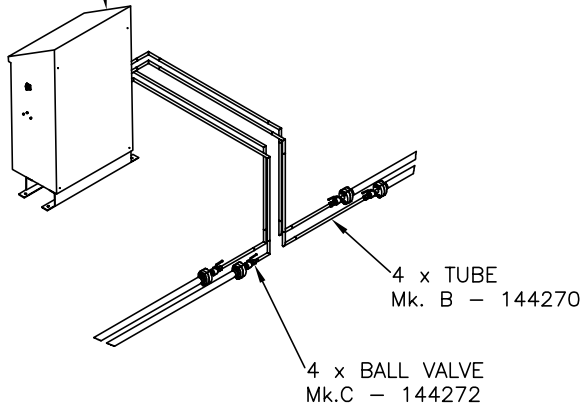
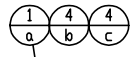
| No. OFF | ITEM | MARK No. | PART NUMBER  | DESCRIPTION         | Material      | Mass      |
|---------|------|----------|--------------|---------------------|---------------|-----------|
| 1       | a    | A        | PUMP CABINET | 20230720AD01        | AISI 316 (SS) |           |
| 4       | b    | A        | SSBAN-21     | TUBE NUT 1 5/16" SS | AISI 316 (SS) | 120.36 Kg |
| 4       | c    | A        | SSBAS-16     | TUBE SLEEVE 1-5/16" | AISI 316 (SS) | 21.36 Kg  |

TABLE Mk.A-144270  
SCALE 1:150

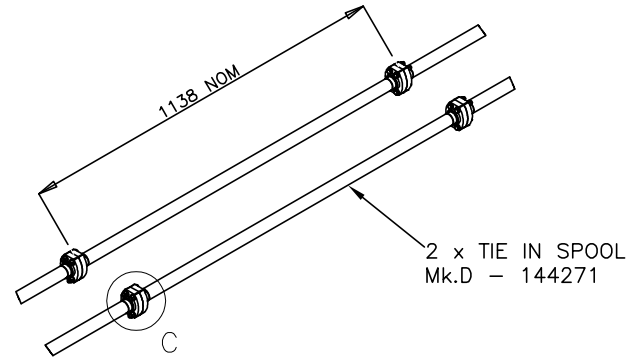


- NOTES:**
1. ALL DIMENSIONS SHOWN ARE IN MILLIMETRES.
  2. ALL DIMENSIONS GIVEN FOR MATERIAL ARE GROSS DIMENSIONS WITH NO REDUCTION FOR WELD PREPARATION.
  3. ALL STEEL HOT ROLLED SECTIONS AND PLATES SHALL BE GRADE 250 OR 300+ STEEL TO AS3678 OR AS3679.
  4. MARK LETTERS FOLLOWED BY DRAWING NUMBER AND ORIENTATION SHALL BE CLEARLY MARKED ON ALL ITEMS.
  5. ALL WELDING AND WELD PREPARATION SHALL BE IN ACCORDANCE WITH QUALIFIED OR PRE-QUALIFIED WELDING PROCEDURE.
  6. WELD ELECTRODE NOMINAL STRENGTH SHALL BE  $F_{uw} = 480 \text{ MPa UNO}$ .
  7. ALL WELDS SHALL BE 3mm CONTINUOUS FILLET OR BUTT UNO.
  8. WELDING SYMBOLS ARE TO AS1101.3.
  9. INSPECTION BY GFG ALLIANCE MAY INCLUDE NON-DESTRUCTIVE TESTING OF ANY WELD.
  10. ALL BOLTING SHALL BE TO AS1252 CLASS 8.8/S UNO.
  11. COMPONENTS TO BE PAINTED TO GFG ALLIANCE PAINT SPEC NC1 COLOUR YELLOW UNO.
  12. ALL REFERENCED STANDARDS SHALL BE TO THE LATEST REVISION.
  13. ALL WELDING SHALL CONFORM TO GFG ALLIANCE WELDING SPECIFICATION SP4/01-ENGINEERING (W137-MTS.104).
  14. SITE INSPECTION REQUIRED TO CONFIRM DETAILS.
  15. FLANGE WELDING 'C' DETAILS ON DRAWING No 144276.

- REFERENCE DRAWINGS:**
- 144268 - ISOPOD / GREASE PUMP INSTALLATION
  - 144271 - TIE IN SPOOL
  - 144272 - HYDRAULIC BALL VALVE
  - 144274 - ISOPOD / TIE IN SPOOL INSTALLATION



DETAIL A  
SCALE 1 : 50



DETAIL B  
SCALE 1 : 25

|   |          |                           |                     |         |       |  |
|---|----------|---------------------------|---------------------|---------|-------|--|
| 2 | E-144270 | MAIN PRESSURIZED PIPELINE | NA                  | 960.0Kg | 134 m |  |
| 2 | D-144271 | TIE IN SPOOL              | NA                  | 19.0 Kg |       |  |
| 4 | C-144272 | HYDRAULIC BALL VALVE      | NA                  | 9.0 Kg  |       |  |
| 4 | B-144270 | 1" SS TUBE LENGTH         | AISI 316 SS/20.0 Kg | 4.5 m   |       |  |
| 1 | A-144270 | TABLE                     | SEE ITEM LIST       |         |       |  |

| No. OFF | MARK No. | DESCRIPTION | MATERIAL | MISS/UNT | REMARKS           | SIP INITIAL NUMBER |
|---------|----------|-------------|----------|----------|-------------------|--------------------|
| 1       | COL      |             |          |          | DATE : 19/10/2023 | SCALE :            |

| NAME        | SIGNATURE |
|-------------|-----------|
| DRAWN JW    |           |
| CHECKED DH  |           |
| REVIEWED PD |           |

64 AUDLEY STREET  
WOODVILLE NORTH  
SA 5012 AUSTRALIA  
Ph : 08 8347 1700

**HYDROIL**  
HYDRAULIC SERVICE

Project Number  
144270

PEA | 46P | 46A | LUB

Revisions  
CAD. REF. :

92813395 NOTIF.



144270