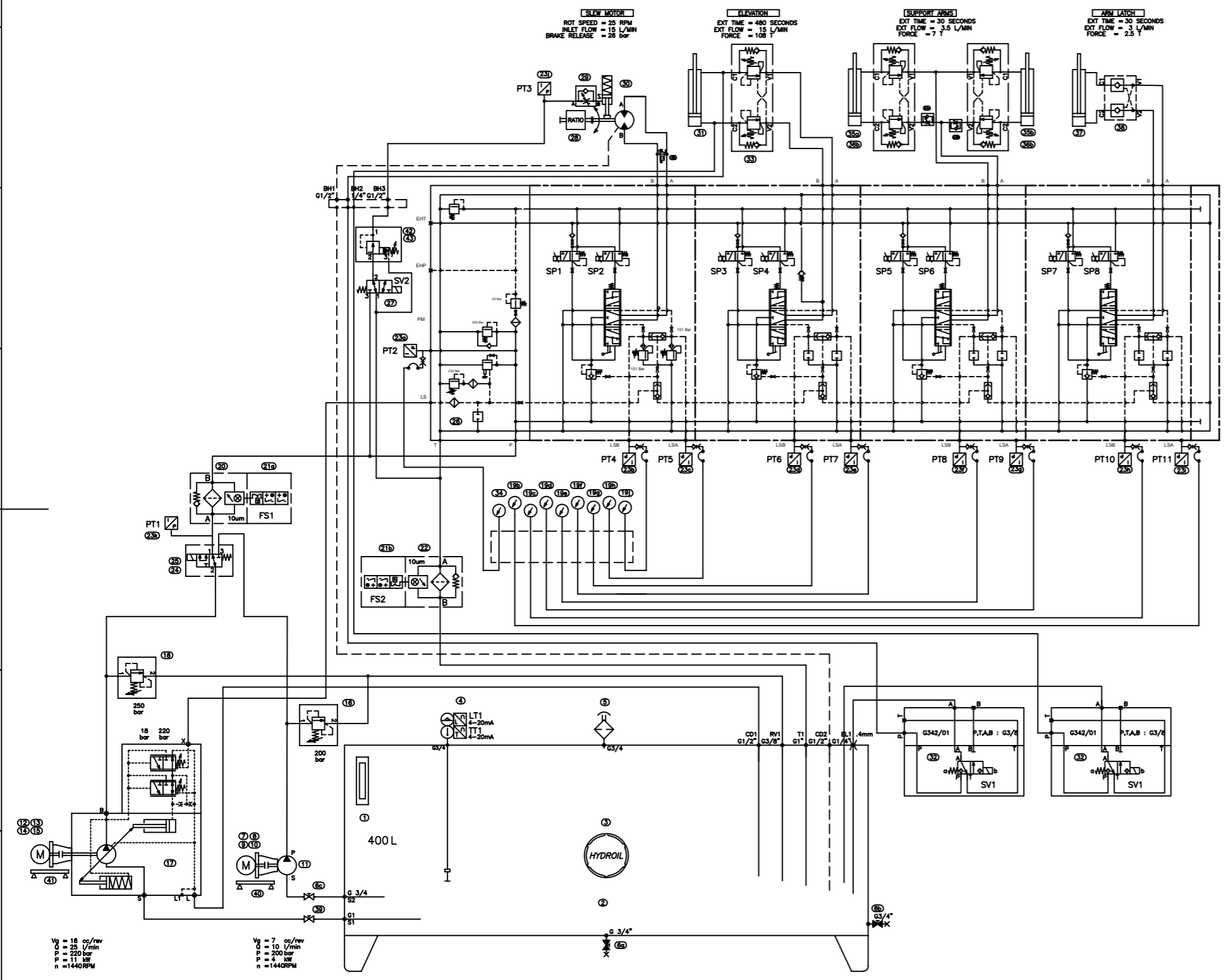
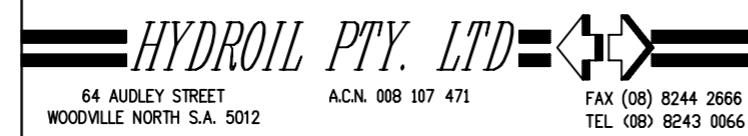


| Rev. | Zone | Description                  | ECR No. | By | Date  |
|------|------|------------------------------|---------|----|-------|
| 9    |      | ITEMS CHANGED 24,25,32,42,43 |         | AH | 8/2   |
| 10   |      | ITEMS CHANGED 32,44,45       |         | PD | 11/05 |



| Item | QTY | Description               | MANUF   | Part No                      |
|------|-----|---------------------------|---------|------------------------------|
| 43   | 1   | BRAKE PRESSURE VALVE      | HYDROIL | 425-PD11A30BL                |
| 42   | 1   | IN LINE MANIFOLD          | HYDROIL | 425-ML-11A3-G03-T01          |
| 41   | 1   | ELECTRIC MOTOR MOUNT      | HYSD*** | HYSD***                      |
| 40   | 1   | ELECTRIC MOTOR MOUNT      | HYSD*** | HYSD***                      |
| 39   | 1   | ISOLATION VALVE           | HYDROIL | EH1001 1"                    |
| 38   | 1   | PILOT CHECK VALVE         | HYDROIL | 095-FPD 1/4                  |
| 37   | 1   | ARM LATCH CYLINDER        | HYDROIL | HS15-FC-101.6-RC-S           |
| 36   | 2   | LOAD HOLDING VALVE        | HYDROIL | FPO 50 D 3/8 L 20            |
| 35   | 2   | SUPPORT ARM CYLINDER      | HYDROIL | HS15-IT-550MM-RC-S           |
| 34   | 1   | GAUGE                     | HYDROIL | RG 0 - 50                    |
| 33   | 1   | LOAD HOLDING VALVE        | HYDROIL | FPO 50 S 1/2 L 20            |
| 32   | 2   | EMERGENCY LOWERING VALVE  | HYDROIL | M-3SED6CK13/350CG24N9K4+G342 |
| 31   | 1   | ELEVATION CYLINDER        | HYDROIL | HHM1250-MP5-2300MM-2         |
| 30   | 1   | SLEW MOTOR                | HYDROIL | SL3002-MP1/34/FL750.10C      |
| 29   | 1   | BRAKE SPEED CONTOL        | HYDROIL | 095-FPU 1/2                  |
| 28   | 1   | REDUCTION GEAR BOX        | HYDROIL | 41:1                         |
| 27   | 1   | BRAKE RELEASE VALVE       | HYDROIL | 425-ES08W3A14N04             |
| 26   | 1   | DIRECTIONAL CONTROL VALVE | HYDROIL | SPV125                       |
| 25   | 1   | INLINE MANIFOLD           | HYDROIL | B1030-12U-S1-ST              |
| 24   | 1   | PUMP SELCTION VALVE       | HYDROIL | 425-ES10W3C11P04             |
| 23   | 11  | PRESSURE TRANSMITTER      | HYDROIL | PU5401                       |
| 22   | 1   | INLINE FILTER             | HYDROIL | 110LEN0100-2X/PWR10A00       |
| 21   | 2   | CLOGGING INDICATOR        | HYDROIL | WE-2SPSU-M12X1               |
| 20   | 2   | INLINE FILTER             | HYDROIL | 245LEN0063-PWR10A00-         |
| 19   | 8   | GAUGE                     | HYDROIL | RG 0-250                     |
| 18   | 1   | RELIEF VALVE              | HYDROIL | 095-FPM D CB 40 P 3/8 35     |
| 17   | 1   | PISTON PUMP               | HYDROIL | A10V028DFR1/31R-PSC62N00     |
| 16   | 1   | RELIEF VALVE              | HYDROIL | 095-FPM D CB 40 P 1/2 35     |
| 15   | 1   | PUMP COUPLING             | HYDROIL | OMT4040SE10                  |
| 14   | 1   | MOTOR COUPLING            | HYDROIL | OMT4080C47                   |
| 13   | 1   | BELLHOUSING               | HYDROIL | TH3101A                      |
| 12   | 1   | ELECTRIC MOTOR            | HYDROIL | TA4C110-TA1                  |
| 11   | 1   | GEAR PUMP                 | HYDROIL | 321-1P-3028CLSJAN            |
| 10   | 1   | PUMP COUPLING             | HYDROIL | ND65QD10                     |
| 9    | 1   | MOTOR COUPLING            | HYDROIL | ND65C                        |
| 8    | 1   | BELLHOUSING               | HYDROIL | TH2825A                      |
| 7    | 1   | ELECTRIC MOTOR            | HYDROIL | TA4B040-TA1                  |
| 6    | 3   | DRAIN BALL VALVE          | HYDROIL | EH1001 3/4"                  |
| 5    | 1   | FILLER BREATHER           | HYDROIL | AB1162                       |
| 4    | 1   | LEVEL AND TEMP INDICATOR  | HYDROIL | LT3023                       |
| 3    | 1   | INSPECTION COVER          | HYDROIL | HYDS***                      |
| 2    | 1   | 400L HYD TANK             | HYDROIL | HYDS***                      |
| 1    | 1   | Site Gauge                | HYDROIL | 085-L05.245TE                |

UNLESS OTHERWISE STATED  
All Dimensions in Millimeters  
MACHINED FABRICATED  
0: ±0.5 0-100 ±0.5 Angle: ±0.5°  
0.0 ±0.1 101-500 ±1.0  
0.00 ±0.01 501-2500 ±2.0  
0.000 ±0.002 Over 2500 ±3.0  
Machined:  $\sqrt{3.2}$



|          |    |                  |         |           |          |
|----------|----|------------------|---------|-----------|----------|
| Material | .. | Drawn By         | AH      | App'vd By | PD       |
| Finish   | .. | Checked By       | PD      | Date      | 03/10/22 |
|          | .. | Drawing Practice | AS 1100 |           |          |
|          | .. |                  |         |           |          |

|             |       |                      |          |  |
|-------------|-------|----------------------|----------|--|
| Description |       | Power Unit S.L       |          |  |
| Sheet       | Scale | Part No./Drawing No. | Revision |  |
| 1/1         | 1:1   | HS-0559-PD           | 10       |  |

**DO NOT SCALE**